

2017 - ANNUAL REPORT

17 years of experience in applied decorative art in paediatric wards, specialized institutions and homes for the elderly.

Paint a Smile





"Thanks to the action of Paint a Smile, children find imaginary worlds in which they can escape and which helps them to de-dramatize their stay."

Dr. Peter Rimensberger
*Senior Physician Neonatology and Intensive Paediatric Care Unit
Geneva University Hospital*

A word from the President	p. 5
Portrait of the Foundation	p. 6
A faithful partner	p. 8
Our artist painters	p. 10
Portraits of the Artists	p. 14
Projects carried out in 2017	p. 18
Events and Functions	p. 38
Organizational Structure	p. 44
Auditor's Report	p. 46
2017 figures	p. 47
2017 Balance sheet	p. 48
Operating account for the fiscal year	p. 49
Acknowledgements	p. 50
2017 at a glance	p. 52

Photo credit
 © Fondation Paint a Smile : Cargill International SA, Jérôme Cousin, Elise Indovina,
 Etienne Delacrétaç, Mégane Fontaine, Magali Girardin, Aline Kundig,
 Jean-Yves Lacôte et Rui Rodrigues
 Graphic Design and Layout
 Oh comme c'est beau

Translation
 roberta@grahamtranslation.com

August 2018 - Printed at 250 copies



Dear friends,

The year 2017 is characterized by a strong presence in French-speaking Switzerland, as four of the five projects realized over the year were in the cantons of Vaud and Geneva. Two projects, paediatric hospitalization services and paediatric emergencies, were carried out in the Ensemble Hospitalier de la Côte (EHC) in Morges, totalling 153 days of work for our artist painters that brought joy and the possibility to dream to both patients and the medical staff. Our teams also carried out a project at the Résidences de La Combe in Collonge-Bellerive, one of 30 facilities for people with disabilities managed by EPI (the Public Establishment for Integration). The fourth project on Geneva soil was carried out at the HUG Loëx Hospital, where a long, sad and boring corridor – as admitted by persons onsite – now tells great stories and deserves to be remembered.

Lastly, a team has been working on a project in Belgium at the Queen Fabiola Children's University Hospital (HUDERF) in Brussels. During 146 days, our artist painters transformed the Outpatient Oncology Unit. This project was realized thanks to the support of SC Johnson, our very faithful partner for many years.

A total of 245 litres of paint and 65 m² of decorative adhesive were needed to improve these living areas in 2017.

I would like to acknowledge all the companies, foundations and individuals who have given us their support us, particularly the Banque Cantonale Vaudoise, the Amis de l'Hôpital de Morges, the Alfred & Eugénie Baur Foundation, the Loterie Romande and the Cargill company, as well as the Mosaïc School and the Florimont Institute.

I would also like to thank all the runners who, year after year, as friends, wear our colours on the occasion of the Escalade race.

Thanks to the "Equipe des Couleurs", we have indeed been able to harvest more than Frs. 9,000 for a project to be carried out at the walk-in clinic of Onex (Cité Générations) in 2018.

Finally, I wish to express my deep gratitude to Caran d'Ache for the friendship it has shown us for more than a decade. On behalf of the Board, I convey our gratitude to our Director, Claire Bulliard, without whom these wonderful projects would not see the light of day, as well as to all our artist painters, whose creativity and talent have been at the service of our cause for nearly 20 years.

In 2020, the Foundation will celebrate its 20th anniversary. Our goal is to complete 200 projects by this anniversary date, and we count on your support. To date, more than 182 projects in 18 countries around the world have already been completed.

To all the people who have stood with us and who bear witness to their friendship year after year, I extend my sincere thanks.

Nicolas Killen
Président

Recognised as being in the public interest, the Paint a Smile Foundation is a non-profit organization, based in Geneva. Since its inception in 2000, its mission is to create frescos and therapeutic decorative installations in medical environments, in Switzerland, as well as abroad.

The objectives

- Create tailor-made designs that open up the imagination and stimulate positive thoughts to help endure hospitalizations or stays in specialized institutions;
- Provide opportunities for healthcare givers to divert the attention of patients during medical procedures;
- Improve the reception of patients and their stay by means of entertaining decorations conducive to relaxation and good humour.

The specificities

Medical establishments and specialized institutions have confidence in the Paint a Smile Foundation as a result of the rigor and professionalism with which it pursues its work. Each decor is unique. Particular care is given to the preparation and evaluation of these tailor-made projects. The themes are developed taking into account the treatment of pathologies and the diversity of people received. An on-going dialogue with medical professionals is a real strength that allows our team to develop its know-how and create genuine therapeutic tools. Paint a Smile collaborates with a dozen independent artist painters from various artistic backgrounds. These qualified professionals are comfortable working in a medical environment. They work in institutions without hindering the organization of the premises.

Funding

Most Paint a Smile projects have been realized in hospitals and other medical institutions. The members of the Board and the Director are in charge of fundraising with companies, foundations and philanthropists. Sports and other public events are also regularly organized to raise funds.

The Paint a Smile Foundation pays special attention to its expenditures and applies a policy of transparency on the use of donations. It is subject to the Federal Surveillance Authority (DFI). Its supervisory body is the fiduciary ECHO SA in Geneva.

Since 2000, Paint a Smile has decorated 182 care and living facilities across 18 countries, across the world, as colours have no borders for these patrons, sponsors and partners.



The Mosaic School

Since 2006, the Mosaic School has been working alongside the Paint a Smile Foundation. For this commitment to be meaningful, we made a point of getting our students involved, which is why each year our children participate in the "Escalade" Run and team up with the "Equipe des Couleurs".

Nearly 100% of our students sign up for the Escalade Run; it is a key event in school life! Paint a Smile welcomes parents and children to the Café des Bastions and the hours pass happily in preparation for departures, warm-ups, runners returning out of breath, and happy parents. It is an intense day that, thanks to the Foundation, is experienced as a day of laughter and joy.

Paint a Smile presents its work to the children annually; and once a year we visit one of their completed projects. This visit entails a lengthy preparation to open the children's eyes to the reality of the hospital world. It is always an emotional day when they look at this universe lived daily by so many children who are all like them, but who lack this essential asset: good health.

Parents, children and teachers at the school are happy and proud of their commitment.



The Mosaic School in a few words

I founded the Mosaic School in 2004, convinced that today it is necessary more than ever to learn to overcome our preconceptions, to open up to the reality of a multicultural world, through the knowledge and the understanding of one another.

In our opinion, this process is intricately linked to the integration of multilingualism in education. That's why we have not only developed our own bilingual program based on the PER (Programme d'Études Romand) and on the British national curriculum, but also introduced an openness to German and other non-Latin languages (Russian, Mandarin, and Arabic).

Our teaching goes beyond a purely academic curriculum, not only to make students aware of artistic and sports subjects, but also and moreover to help the development of other emotional and intellectual abilities. It is in particular the integration of theatre in the curriculum from the age of 3, but also dance, hip hop, etc.

And if today Mosaic welcomes children till age 12, we are really addressing tomorrow's adults.

Sylvie Johannot



The work of Paint a Smile artists requires constant readjustments – not only to adapt to each location and understand its identity, but also to meet the needs of patients, residents and healthcare givers.

The work of professionals

Our artists – about a dozen – are professionals mandated and paid by Paint a Smile. They are of different nationalities and from various artistic backgrounds. The Foundation provides a training period to ensure their ability to work for several weeks in specific and demanding environments.

On average each artist works 13 weeks a year on projects throughout Europe. This regularity allows for continuous improvement of the artistic quality and the therapeutic application of the decor.

Teamwork

The team is made up of model designers, colourists, graphic designers and artist painters. The synergy between all these human resources and professional skills is essential to achieve our goals and renew our know-how. The team is under the responsibility of a project manager and a team leader who manage the design and implementation of the decoration project. The director also often consults with the project manager regarding the application of new working methodologies and the development of new communication media off and on line.

Students in applied art schools are often welcomed into the team to offer them the opportunity of an internship in a medical facility.



An essential collaboration

Our activity is part of a very demanding environment. The quality of our decorations applied to the medical cause is also the result of close collaboration with the medical, educational and administrative teams.

This moment of exchange is essential: the team must understand perfectly the institution, its philosophy and its objectives. This is the opportunity to consolidate the partnership into a common goal: to contribute to the quality of care through scenes that bring relaxation, comfort and tenderness in a context that may generate anxiety and withdrawal within oneself.





"It is a great source of pride as director of the Paint a Smile Foundation to be associated with the outstanding work of these artists. Thanks to their immense talent and humanity, they create moments of lightness by drawing the eye to scenes that are brimming with humour and tenderness. They are magicians who provide an immense amount of joy and imagination to the most fragile."

Claire Bulliard,
Director of the Paint a Smile Foundation

"The stories told relate to those of the hospital, of the realities of the department, but also of jokes. This dialogue between two worlds has allowed the creation of a comforting atmosphere."

Sandrine Suykerbuyck,
Head Nurse, Queen Fabiola Children's University Hospital

"Thank you for the imagination of your stories on the walls of the paediatrics unit. This is how to entertain our little patients and their families. It was very interesting to see you at work. Bravo!"

Annick
Nurse, Ensemble Hospitalier de la Côte (EHC)

"Taking care of a child is not limited to caring for their bodies, it is also necessary to take care of their dreams."

Dr. Graziella Raimondo,
Chief Physician, Margency Children's Hospital



Clément Chabert

Illustrator, cartoonist, animator
41 years old
Paris - France

Like all children, I drew. And I never stopped. My studies at the Emile Cohl School enabled me to turn it into my profession.

First and foremost, this job is a way of telling stories. I do it in various ways – in comic strips, in illustrated books, in educational material, and in museums.

In 2004, when I began working for Paint a Smile, I discovered a new great way to do it, on walls and under the gaze of children.

Every project is a challenge. You have to understand the sites and manage to make them live differently. It is a small revolution that we must put into action discreetly, which must integrate into the usual functioning while making it more joyful, and which adapts constantly to what we continually learn about the places.

Customized work in short.

The enthusiasm of patients, their families and healthcare givers is a constant reminder of the importance of our work.



Céleste Gangolphe

Painter, muralist, visual artist
31 years old
Lyon - France

Following a first professional life in Paris in marketing and digital communication services at the L'Express newspaper and at Publicis, I launched into murals in 2014.

Designing a mural is a different exercise each time, as it is about adapting to a space and to those who live there, while trying to create an image that engages, that can inspire dreams and especially that makes sense.

I work today as an independent painter on personal fresco projects as well as in the service of other organizations.

During my training as a mural painter at ECohlCité (an association of the Cité de la Création, world leader in mural painting, and the Emile Cohl School, considered a standard for illustration in Lyon), I was fortunate to discover the work done by the Paint a Smile Foundation.

This approach, the teams and their projects in a way confirmed my reconversion.

Indeed, my goal was to be able to combine painting, drawing and working as part of a team, in the social sector. This is proven at each new site with the foundation. The values and the approach of Paint a Smile resonate with me and make sense. It is in this perspective and with all my commitment that I enjoy working on the various projects of the Foundation.



EHC - Ensemble Hospitalier de la Côte Morges, Switzerland

Department decorated	Paediatrics
Number of working days	100
Number of artist painters	4
Attendance	1,183 patients per year

Project realized thanks to the support of

Amis de l'Hôpital de Morges, Banque Cantonale Vaudoise Ensemble architecture SA, Adani Constructions Métalliques Sàrl, Alvazzi Holding SA, Amstein + Walthert Genève SA, Ateliers Services AT SA, Balzan + Immer SA, CIEL Electricité SA, CMA Constructions Métalliques, Dimag Energie SA, Dvg Sàrl, Fire System SA, Frutiger SA, Georges Dentan Genève SA, H. Schumacher ingénieurs conseils SA, ISS Facilities SA, Mathey agencement, M+M Montage et Maintenance SA, Monod Piguet Ingénieurs Conseils SA, Pfister Professional SA, Pierre Chuard Ingénieurs Conseils SA, Sottas SA, Varin-étampage SA, Von Auw SA

Testimonials

We wished to have themes that we hold close and anchored in the region. The decoration will remind children of familiar and reassuring activities and landscapes.

Valérie Klein
Midwife Responsible for the Mother-Child Sector



Scene at the entry of the treatment room



"Summer" sector: scene in the corridor leading to the hospital rooms



"Winter" sector: detail of a scene in the corridor leading to the hospital rooms

EHC - Ensemble Hospitalier de la Côte Morges, Switzerland

Department decorated	Paediatric Emergency Room
Number of working days	53
Number of artist painters	4
Attendance	6 662 patients per year

Project realized thanks to the support of

Amis de l'Hôpital de Morges, Banque Cantonale Vaudoise Ensemble architecture SA, Adani Constructions Métalliques Sàrl, Alvazzi Holding SA, Amstein + Walthert Genève SA, Ateliers Services AT SA, Balzan + Immer SA, CIEL Electricité SA, CMA Constructions Métalliques, Dimag Energie SA, Dvg Sàrl, Fire System SA, Frutiger SA, Georges Dentan Genève SA, H. Schumacher ingénieurs conseils SA, ISS Facilities SA, Mathey agencement, M+M Montage et Maintenance SA, Monod Piquet Ingénieurs Conseils SA, Pfister Professional SA, Pierre Chuard Ingénieurs Conseils SA, Sottas SA, Varin-étampage SA, Von Auw SA

Testimonials

The drawings bring colour, joy and dreams. This is essential for hospitalized children and illustrates perfectly the type of projects we wish to support.

Claire Richard

President of the Association of Friends of the Hospital of Morges



Adhesive decoration on the door separating adult and child emergencies



View of the waiting room



Examination Room # 2, View from an examination bed: adhesive decoration on the ceiling



View with the headrest raised



Examination Room # 1: Scene opposite the examination bed

EPI - The Public Establishment for Integration

Collonge-Bellerive, Switzerland

Site decorated	Résidence de la Combe
Number of working days	107
Number of artist painters	7
Attendance	80 residents

Project realized thanks to the support of



Testimonials

Thanks to the fantastic and warm Paint a Smile Foundation team, we were able to breathe new life into the walls of the main building of Les Résidences de La Combe in Collonge-Bellerive, one of thirty sites managed by EPI that welcome persons with disabilities.

At La Combe, nearly 100 users now have the daily pleasure of crisscrossing the building between joyful and very sweet frescoes of urban and rural scenes.

We shelter primarily adult users with intellectual disabilities at this site; and we, therefore, particularly appreciated the care and the attention given by the direction and the painters to these persons with very specific needs.

All our gratitude is also extended to the generous donors brought together thanks to the convincing and compelling commitment of Paint a Smile.

Alain Kolly

Director General of the Public Establishment for Integration



Detail of the fresco opposite the pool



Entrance of the residence: integration of the furnishings in the fresco



Stairs between the ground floor and the garden level: main scene of the project in progress



Exterior wall of the multipurpose room: scene illustrating the activities practiced

HUDERF - The Queen Fabiola Children's University Hospital Brussels, Belgium

Department decorated	Outpatient Oncology Department
Number of working days	146
Number of artist painters	6
Attendance	5 300 hospitalisations per year

Project realized thanks to the support of



Check out the Report on YouTube!

Testimonials

The environment in which children in poor health interact is of utmost importance to the hospital, which sees the well being of the child as an integral component of care.

Upon entering the Outpatient Oncology Department, patients rediscover «their» department, immersed in a new illustrated universe representing an optimal and near future on a volcanic island populated by animals, robots, but also

humans and extra-terrestrial creatures... Caring figures, surrounded by high-tech accessible to all, which gives a bright idea of the future, where everyone is a citizen of the universe.

Maud Rouillé

HUDERF Communications Manager

"Cosmopolitan Brussels" and its symbol, the Atomium, a surprising and futuristic monument nearby, inspire the frescoes.

Dorothee Reynaud

Project Manager Paint a Smile

Our wish, wherever we establish ourselves, is to be a good neighbour to those around us. We are committed to sharing our resources for the good and development of the people and the environment.

This year we wanted to invest in the HUDERF Outpatient Oncology Department. We have joined forces with the Paint a Smile Foundation, whose mission is to lighten the daily lives of children hospitalized worldwide through painted frescoes.

These creative frescoes are uniquely designed and created for each site. Thanks to our financial support, a team of six artists from Paint a Smile decorated this department with scenes that are entertaining and full of hope.

Victoria Pallot

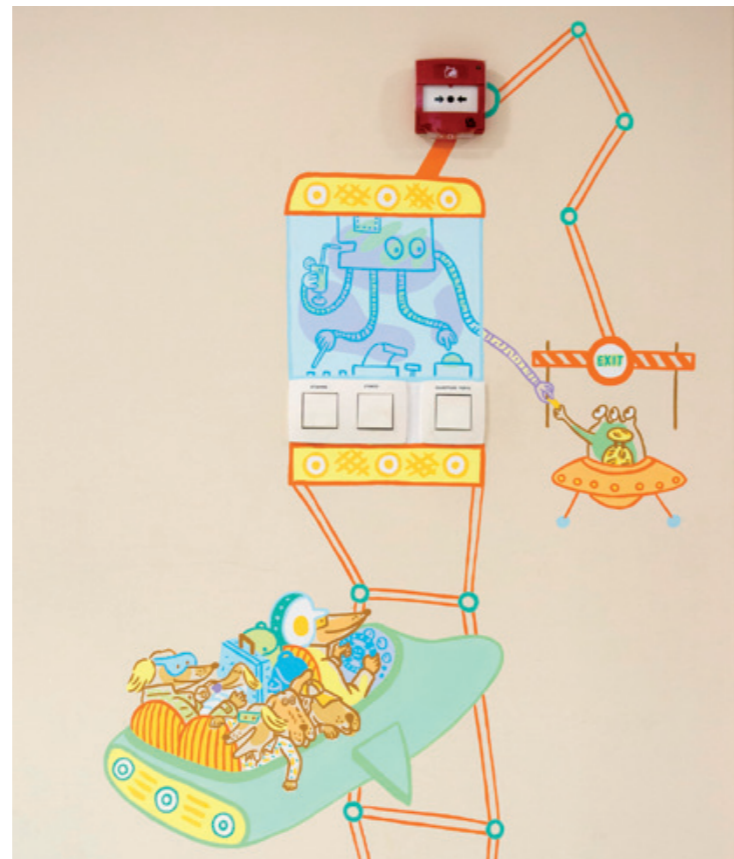
Senior Associate, Community Affairs, SC Johnson



Sample scene in one of the eight rooms of the department



Reception area: reception desk



Example of the integration of elements



An exchange during an examination in the decorated treatment room

HUG - University Hospitals of Geneva

Geneva, Switzerland

Site decorated	Loëx Hospital
Number of working days	75
Number of artist painters	4
Attendance	110 patients per year

Project realized thanks to the support of



Testimonials

it is with pleasure and enthusiasm that I coordinated with Paint a Smile the decoration project for this long, sad, and boring corridor used by patients, visitors and staff.

The graphics, paintings and colours needed to be compatible with an adult and/or elderly community hosted within the establishment. The "challenge" is accepted. Bravo.

During three weeks the very friendly and discreet artists animated the passageway with their presence and their availability to listen to comments and answer questions from an enthusiastic audience.

The corridor remained accessible, allowing its users to discover the evolution of the drawings, the addition of details, and the final discovery of the paintings...

The decor is fresh and tender, rich with amusing details, animated by different scenes of life where we discover a dancing duo, mountaineers, and an idle cat, amongst others...

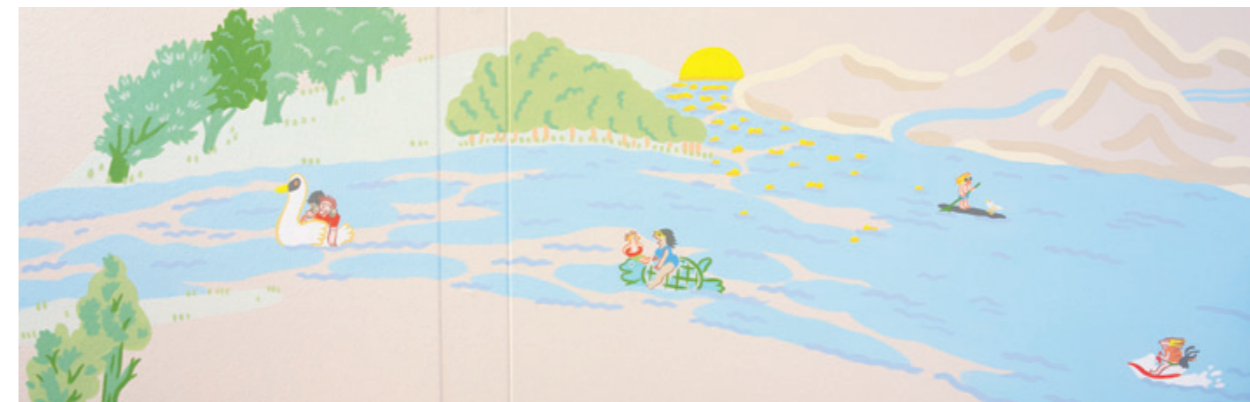
The corridor, which was once silent, now tells many stories as one passes through it.

I thank you and all of your team a thousand times.

Andrienne Killisch Gay
DRMP Facilitator, Loëx Hospital



The "Lagnon" side: detail of a scene



Illustrations of nautical activities in the Geneva region



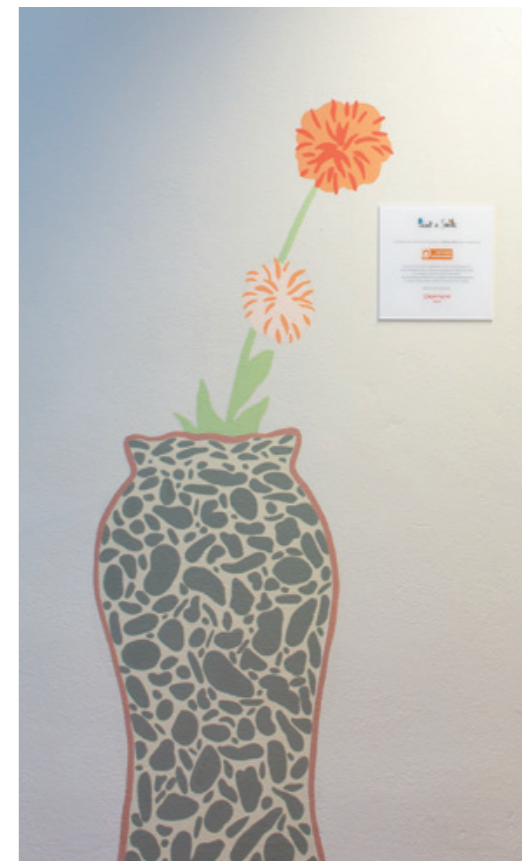
Example of two scenes while wandering through the corridor



"Lagnon" entrance: rendering of a winter garden



Junction with part of the "Lanance" corridor: scene on the lake shore



Détail: an allusion to surrounding themes

Bike-IT : United sporting achievement

Geneva, Switzerland

Bike-IT is a united sporting achievement organized by Cargill International SA's IT team: 10 hours to cover 1,650 km on training bikes and 60 participants for this mad race.

We extend our heartiest thanks to Mélanie Half, Stuart Barber, Jonathan Cook and Sylvain Pralon, the Bike-IT organizers.

Thanks to this great energy, the sum of CHF 3,000.- was raised in favour of Paint a Smile's project at the Loëx Hospital.



"Movie Night" : Solidarity action organized by students of the Florimont Institute

Geneva, Switzerland

A big thank you to the 4B3 class of the Florimont Institute for its "Movie Night"! Thanks to this solidarity event, CHF 968.- was raised for a Paint a Smile project at the Résidence Clair Bois-Minoteries, for persons with disabilities. Photo results to be revealed in the coming year.



The colours team

The annual rendez-vous

As every year during the "Escalade" race, Paint a Smile hosted the Colours Team: more than 353 runners and walkers joined in. The atmosphere was friendly, sporty, and festive! Our Smile Team welcomed walkers at the Eden School and runners at the Café Restaurant of the Parc des Bastions, our partners of this solidarity event. This 12th edition allowed us to raise CHF 9,005.-!



Nestlé supports us!

This year Paint a Smile a Smile received support from Nestlé as part of its contributions to projects dedicated to the health and well-being of children and young people in Switzerland and abroad.



2017
Community Support

SANTÉ NUTRITION, ENFANTS ET JEUNESSE
GEHÖRHEIT, ERNÄHRUNG, KINDER UND JUGENDLICHE
HEALTH, NUTRITION, CHILDREN AND YOUTH

- Camps / Camps
- ICL Young Riders meeting

SOLIDARITÉ SOCIALE ET HUMAINNE
SOCIAL AND HUMANITARIAN ASSISTANCE
SOCIAL AND HUMANITARIAN SUPPORT

- 4 Rivers de Sécurité
- Aide Suisse aux Maltrégués

ACTIVITÉS CULTURELLES
CULTURAL AND RECREATIVE
CULTURAL ACTIVITIES

- Activités de Musique de Locumbe
- Chocologie

BON ÉTRETE ET DEVELOPPEMENT
WELL-BEING AND DEVELOPMENT
WELLNESS AND DEVELOPMENT

- Association Family Games
- Paint a Smile

WELLNESS AND DEVELOPMENT

Paint a Smile

Des hôpitaux en couleur pour un monde meilleur
Le hôpital Paint a Smile est un 2017 événement artistique participatif à but non lucratif. Depuis sa création en 2005, ce mouvement d'élèves de écoles et universités en milieu académique, principalement dans les universités de médecine, offre à des hôpitaux et établissements de soins un environnement complet pour les patients. Ces actions artistiques, qui visent à communiquer avec la communauté, impliquent des bénévoles locaux, professionnels et volontaires pour améliorer l'environnement hospitalier et ainsi améliorer la qualité de vie des patients et de leur famille dans un environnement hospitalier et académique.

Les artistes peignent sur des professionnels, qualifiés et formés par la Fondation suisse de soins de santé et de soins. Ils créent des œuvres d'art et des installations en collaboration avec les patients et le personnel soignant pour que leur séjour soit plus agréable et moins stressant.

Depuis sa création en 2005, Paint a Smile a décoré 170 hôpitaux dans 16 pays à travers le monde entier.

Interprété par notre directeur, Nestlé a décidé de soutenir cette association en 2017.

Bunte Spitalwände für eine bessere Welt
Die Stiftung Paint a Smile ist eine nicht auf Gewinn ausgerichtete gemeinnützige NGO. Seit ihrer Gründung im Jahr 2005 verfügt sie über ein Netzwerk von über 1000 Kunst- und Handwerkskünstlern, die spenden für die Umgestaltung von Krankenhaushallen und -korridoren engagieren sie gestalten. Die Künstler werden gemeinsam mit dem Management ausgewählt. Die Wände sind bunt und lebensvoll und tragen dazu bei, den Aufenthalt im Krankenhaus zu erleichtern.

Die Wände des Lächelns sind Profis und mit dem Talent und Können der Stiftung versehen. Sie gestalten die Wände unter der Leitung von Patienten und Personal, um die Atmosphäre in der Abteilung zu bereichern.

Seit ihrer Gründung im Jahr 2005 hat Paint a Smile die Wände von 170 Krankenhäusern in 16 Ländern weltweit gestaltet.

Nestlé wurde auf diesem Projekt unterstützt und dankt 2017 die Stiftung als Dankeschön.

Colourful hospitals for a better world
The Paint a Smile Foundation is a not for profit public interest NGO. Since its establishment in 2005, its network has been to draw on hundreds of artists, in particular, with professional skills and experience to be engaged for these kinds of projects. These talented volunteers are selected and coordinated with health professionals and care teams and their families and a positive, lively and comforting environment.

2017 Community Support



Foundation Board

The Board met four times during 2017. Composed of eight volunteer members, it defines the objectives and ethical guidelines to pursue.

President

Nicolas Killen*, *Associate Lawyer, Borel & Barbey Law Firm*

Vice-Président

John Silvin*, *Consultant*

Secretary

Laurence Brenner*, *Project Manager, Palexpo SA*

Treasurer

Richard Albert Col*, *Président SMC Swiss Management Corporation SA*

Members

Laura Cotton, *Founder*

Jean-Guillaume Bavarel, *FMH Medical Specialist, psychiatry and psychotherapy*

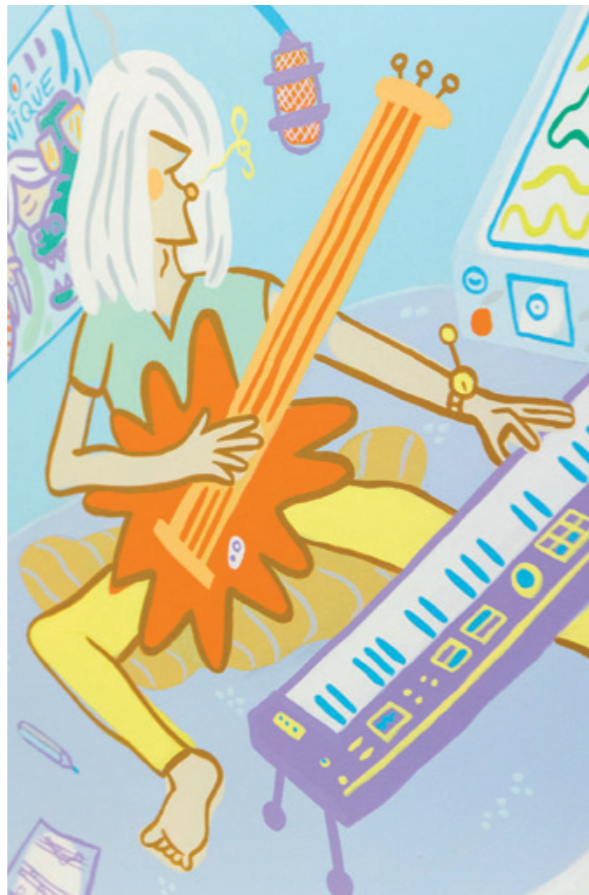
Diana Bès-Vitel, *Consultant*

Giovanni Incisa della Rocchetta, *Consultant*

Management

The Foundation employs a part-time Director; in charge of the administrative and financial management of the Foundation, of fundraising, of the management of projects and various off and on line media communication.

* Joint Signature of two



**REPORT OF THE REVIEW BODY ON LIMITED AUDIT
to the General Assembly of the
Paint a Smile Foundation, Geneva**

As statutory auditors, we have audited the annual financial statements (balance sheet, operating account and annex) of the Paint a Smile Foundation for the 2017 financial year as of 31 December.

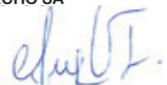
Responsibility for the preparation of the annual accounts rests with the Foundation Board, while our task is to control these accounts. We certify that we meet the legal requirements for accreditation and independence.

Our control was carried out in accordance with the Swiss Standard for limited audit. This standard requires the planning and execution of the audit in such a way that significant anomalies in the annual accounts can be ascertained. The limited audit mainly covers hearings and analytical control operations, as well as appropriate detailed checks of the documents available in the monitored company. On the other hand, checks on operational flows and the internal control system as well as audits and other control operations to detect fraud or other violations of the law are not part of this control.

During our audit, we did not find any evidence to conclude that the annual accounts are not confirmed in accordance with the law and the articles of association.

Geneva, 11 May 2018

ECHO SA



Certified Senior Auditor
(Lead Auditor)

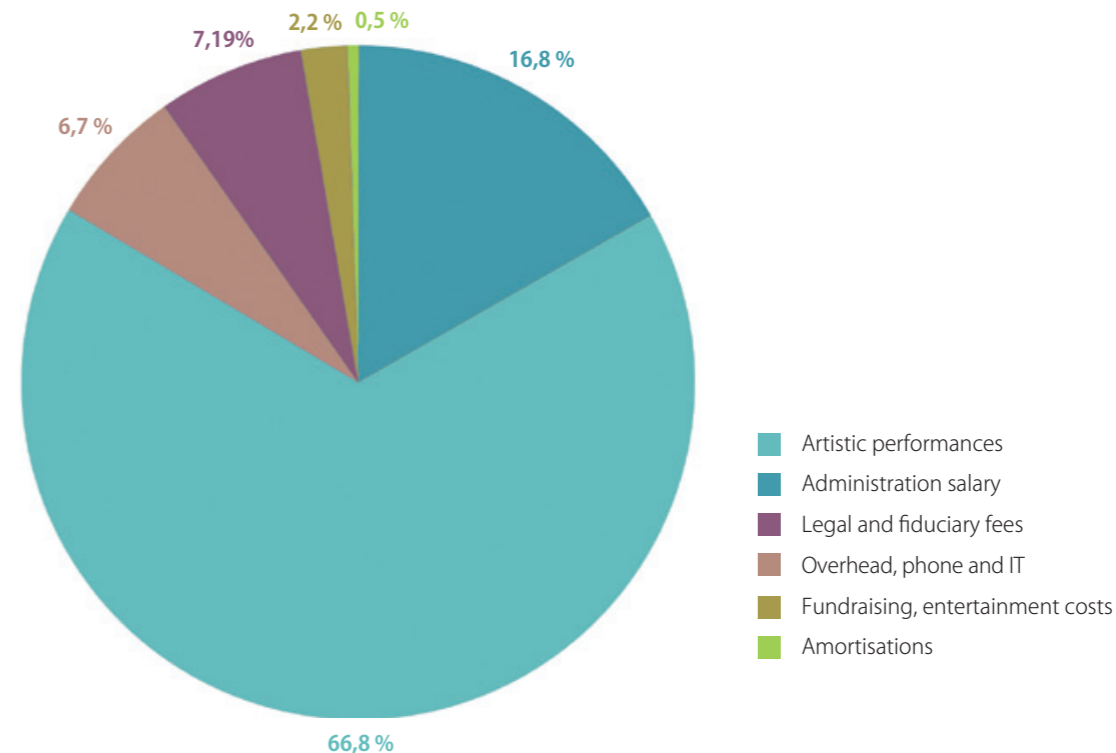


Christophe Decouvette
Certified Senior Auditor

Attachments:

- Annual Accounts (income statement, profit and loss accounts and annex)

Breakdown of expenses





	2017 CHF	2016 CHF
ASSETS		
Current Assets		
Liquidity	206'893	157'007
Stocks	660	440
Prepaid expenses	8'107	5'421
Accrued income	5'000	10'000
	220'660	172'868
Fixed Asset		
Net Tangible Assets	2'379	3'568
	2'379	3'568
TOTAL ASSETS	223'039	176'436
LIABILITIES		
Foreign Assets		
Creditors	31'086	210
Accruals	5'424	7'269
Deferred revenues	79'959	67'779
	116'469	75'258
Equity		
Endowment capital	20'000	20'000
Optional reserves	150'000	150'000
Losses carried forward	(68'822)	(68'223)
Financial year losses	5'392	(599)
	106'570	101'178
TOTAL LIABILITIES	223'039	176'436

	2017 CHF	2016 CHF
OPERATING INCOME		
Donations	271'065	250'375
Total operating income	271'065	250'375
OPERATING COSTS		
Staff expenses	61'507	61'630
Legal and fiduciary fees	18'127	3'305
Overhead costs, telephone and IT	17'212	14'149
Artistic services	153'230	162'543
Travel, fundraising and hospitality costs	5'774	7'225
Expenses from previous years	1'189	1'189
Amortisations	1'189	1'189
Total operating Costs	257'039	250'040
Operating Profit	14'026	334
FINANCIAL RESULTS		
Financial expenses	(2'084)	(903)
Financial proceeds	264	0
	(1'819)	(903)
OUT-OF-PERIOD RESULTS		
Out-of-period costs	(6'815)	(31)
	(6'815)	(31)
PROFIT/LOSS FOR THE FINANCIAL YEAR	5'392	(599)



List of our donors in 2017

We express our profound gratitude to our partners, donors and volunteers who, through their commitment and support, allow us to carry through our mission.

Colour partner



Major Partner



Associations, companies and donor groups

- Adani Constructions Métalliques Sàrl
- Ajuca Sarl
- Alvazzi Ventilation SA
- Amis de l'Hôpital de Morges
- Amstein & Walther Lausanne SA
- Ateliers Services AT SA
- Balzan + Immer SA
- Banque Cantonale Vaudoise
- Banque Gonet
- Banque Piguet Galland
- Baume et Mercier
- Cargill International SA
- Ciel Société Coopérative
- CMA Constructeurs Métalliques Associés SA
- Dentan Frères SA
- Dimag énergie SA
- Dvg Sàrl
- École Mosaic
- Ensemble Architecture et Urbanisme SA
- Etude Borel & Barbey
- Fire System SA
- Frutiger SA
- H. Schumacher Ingénieurs Conseils SA
- ISS Facility Services SA
- Loterie Romande
- M+M Montage et Maintenance SA
- Mairie d'Anières
- Mathey Agencements
- Monod-Piguet + Associés Ingénieurs Conseils SA

- Nestlé
- Notz Stucki & Cie SA
- Pfister Professional SA
- Pierre Chuard Ingénieurs-Conseils SA
- Richemont International SA
- Smart Impulse
- Sottas SA
- Swiss Risk & Care
- Symbiotics SA
- Varrin SA
- Von Auw SA
- 1788 Capital TRUST Genève

Foundations

- Fondation Alfred et Eugénie Baur
- Fondation Genevoise de bienfaisance Valeria Rossia di Montelera
- Fondation pour la recherche et le traitement médical
- Fondation Rumsey-Cartier
- McCall MacBain Foundation
- The Pharos Trust
- The Rose Charitable Foundation

Private Donors

- Madame C. Dinichert
- Madame C. Banmeyer
- Monsieur Dan Benchetrit





2017 at a glance

480 working days for artist painters in hospitals,
nursing homes, and specialized institutions ;

240 litres of paint ;

65 m² of adhesive decoration ;

And thousands of smiles...

An immense thank you to our faithful partner!

CARAN D'ACHE
Genève



Paint a Smile Foundation

40, rue de l'Athénée

CH - 1206 Geneva

Tél : + 41 22 735 91 25

welcome@paintasmile.org

www.paintasmile.org